



# GAT MONTHLY MEMBERSHIP PROGRESS REPORT

Results as of: 6/30/2023

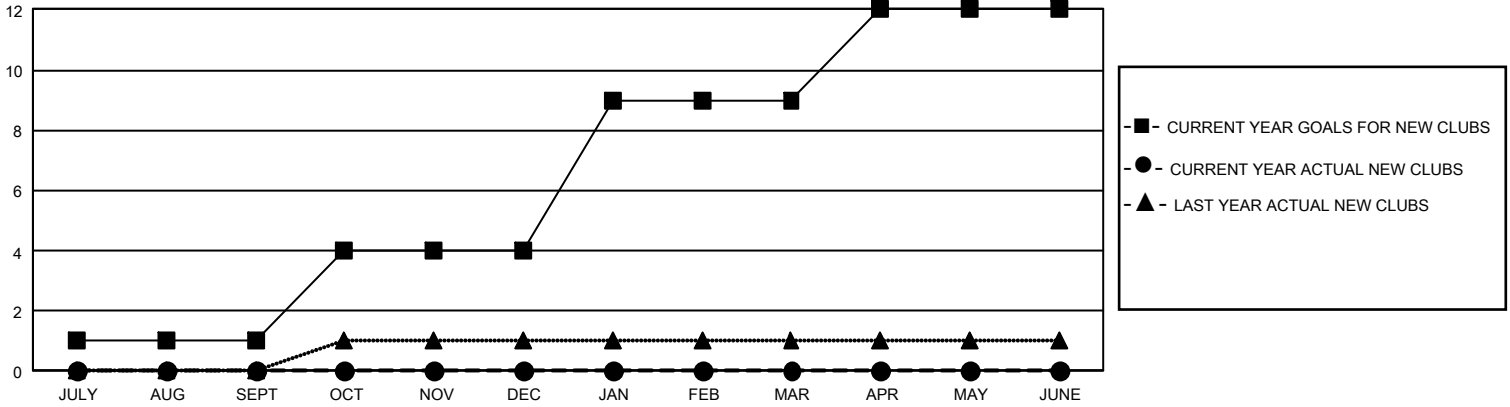
## GMT Constitutional Area 1, Group G

REPORT DOES NOT INCLUDE CLUBS IN UNDISTRICTED AREAS.

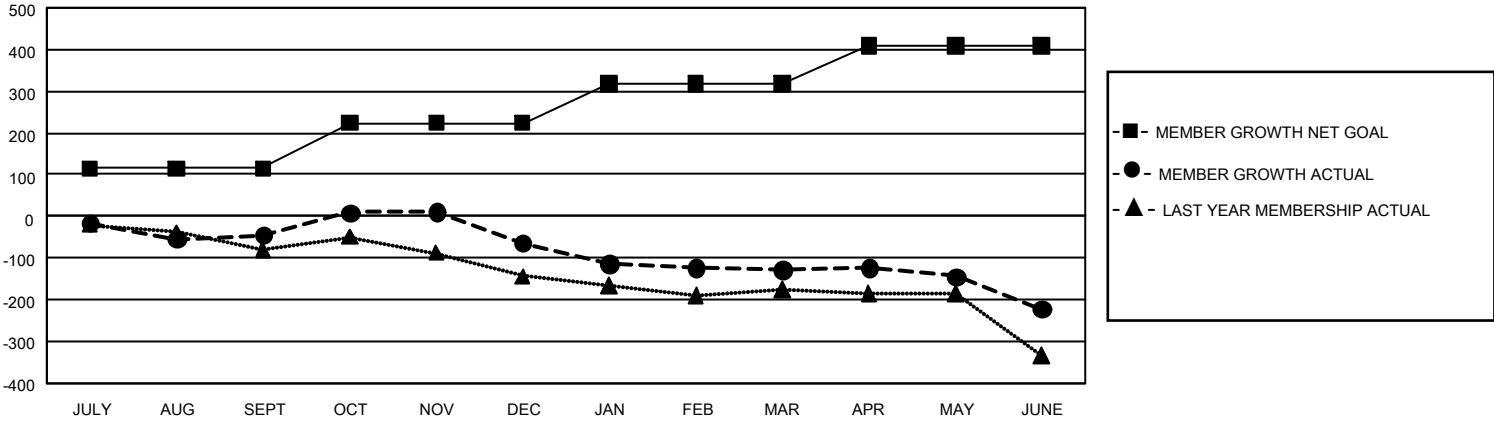
Clubs			
RESULTS FOR 2022-2023			
QUARTER	NEW CLUB GOAL	NEW CLUBS	DROPPED CLUBS
JULY/AUG/SEPT	3	0	1
OCT/NOV/DEC	9	0	0
JAN/FEB/MAR	15	0	0
APR/MAY/JUNE	9	0	2

Members			
RESULTS FOR 2022-2023			
QUARTER	MEMBER GROWTH NET GOAL	MEMBER GROWTH ACTUAL	DROPPED MEMBERS ACTUAL (including transfers)
JULY/AUG/SEPT	115	157	187
OCT/NOV/DEC	109	237	234
JAN/FEB/MAR	93	209	225
APR/MAY/JUNE	93	204	263

GOALS AND ACTUAL NEW CLUBS CUMULATIVE



GOALS AND ACTUAL MEMBERS CUMULATIVE



<b>DROPPED CLUBS: 3</b>	198 CLUBS OF 335 ADDED 1 OR MORE NEW MEMBERS	<b><u>GENDER DISTRIBUTION</u></b>	
		MALE 5,334 (68.03%) FEMALE 2,507 (31.97%) NON BINARY 0 (0.00%) PREFER NOT TO ANSWER 0 (0.00%)	
<b><u>DROPPED MEMBERS</u></b>		<a href="#">CLICK HERE FOR CUMULATIVE MEMBERSHIP DATA</a>	TOTAL FAMILY UNIT MEMBERS 1,570
DECEASED 144 CLUB CANCELLED 39 OTHER 730 <b>TOTAL 913</b>			FAMILY MEMBERS PAYING HALF DUES 800